



Ref : ADM/LMN/2022/12 المرجع :
Date: 16/03/2022 التاريخ :

LOCAL MARINE NOTICE IN ABU DHABI

النشرة البحرية المحلية لإمارة أبوظبي

To : All users of waterways, mariners and maritime operators in Abu Dhabi

إلى : جميع مستخدمي الممرات المائية والبحارة
والمشغلين البحريين في أبوظبي

Location : Old Mussafah Channel, New Mussafah Channel & water surrounding Hudayriat and Al Futaisi Islands

الموقع : قناة المصفح القديمة، قناة المصفح الجديدة، والمياه المحيطة بجزيرة الحديريات وجزيرة الفطيسي.

Subject : Offshore ADNOC 3D Seismic Survey

الموضوع : مسح أدنوك الزلزالي ثلاثي الأبعاد

With reference Local Marine Notice in Abu Dhabi Ref# ADM/LMN/2022/09 Dated 08 March 2022 regarding "Offshore ADNOC 3D Seismic Survey-Revised Survey Plan", kindly note 72 hours lookahead plan as attached.

بالإشارة إلى النشرة البحرية المحلية لإمارة أبوظبي المرفقة رقم ADM/LMN/2022/09 بتاريخ 08 مارس 2022 بخصوص "مسح أدنوك الزلزالي ثلاثي الأبعاد- خطة المسح المعدلة" يرجى ملاحظة خطة البحث لمدة 72 ساعة كما هو مرفق.

All waterways users and marine operators are required to take all necessary actions and instruct their Masters/ Operators to be vigilant and stay well clear of the area of operations and adhere to following Instructions:

على جميع مستخدمي الممرات المائية والمشغلين البحريين اتخاذ ما يلزم وإصدار التعليمات المطلوبة لربابنة سفنهم ومشغلها بضرورة توخي الحذر والبقاء بعيداً عن منطقة العمليات والالتزام بالتعليمات التالية:

1. All concerned parties to be aware that in the area indicated, the seismic equipment will be deployed on the seabed as well as on water surface.
2. Seismic source vessels will be operated day and night during operation periods.
3. Fishing, anchoring stoppage and diving operations in this area are strictly forbidden.
4. All seismic survey operation vessels will be restricted in their ability to maneuver during the seismic operations.

1. على جميع المعنيين العلم بأنه سيتم نشر معدات المسح السيزمي في قاع البحر وكذلك على سطح الماء بالمنطقة المشار إليها.
2. سيتم تشغيل سفن المسح السيزمي (سفن المصدر) ليلاً ونهاراً خلال فترات التشغيل.
3. عمليات الصيد والرسو والتوقف والغوص في هذه المنطقة ممنوعة منعاً باتاً.
4. جميع سفن عمليات المسح السيزمي ستصبح مقيدة في قدرتها على المناورة أثناء عمليات المسح الزلزالي.



5. The seismic survey operation vessels will keep clear of the vessels navigating in the channels while all other vessels should navigate safely with due care and keep clear from seismic survey vessel.

6. Seismic Survey Vessels can be contacted through VHF CH 16 or 75 for further movement information.

7. List of the relevant Seismic Survey Vessels and their communication channels is attached as well.

8. This LMN to be read in conjunction with AD Ports circular/Marine Notice issued for the same project.

Attachement:

- Illustrative map with schedule.
- List of Seismic Survey fleet and contacts

5. ستقوم سفن عمليات المسح السيزمي بالابتعاد عن السفن المبحرة في القنوات المائية بينما يتعين على جميع السفن الأخرى الإبحار بممرات آمنة مع اتخاذ لحذر التام والابتعاد عن سفن المسح السيزمي.

6. يمكن الاتصال بسفن المسح السيزمي من خلال VHF CH 16 أو CH 75 للحصول على مزيد من المعلومات عن الحركة.

7. مرفق أيضا قائمة بسفن المسح السيزمي المعنية وقنوات الاتصال معها.

8. يجب قراءة هذه النشرة المحلية بالتزامن مع التعميم الصادر من موانئ أبوظبي الخاص بنفس المشروع.

المرفقات:

- خريطة توضيحية مع الجدول الزمني.
- قائمة أسطول المسح السيزمي وقنوات الاتصال

سيف المهيري

المدير العام - أبوظبي البحرية

Capt. Saif Al Mheiri
Managing Director – Abu Dhabi Maritime

OFFSHORE ADNOC 3D SEISMIC SURVEY ACQUISITION

Hudayrait Block–Look Ahead

Issued on Mar 14th 2022

Effective on Mar 15th 2022

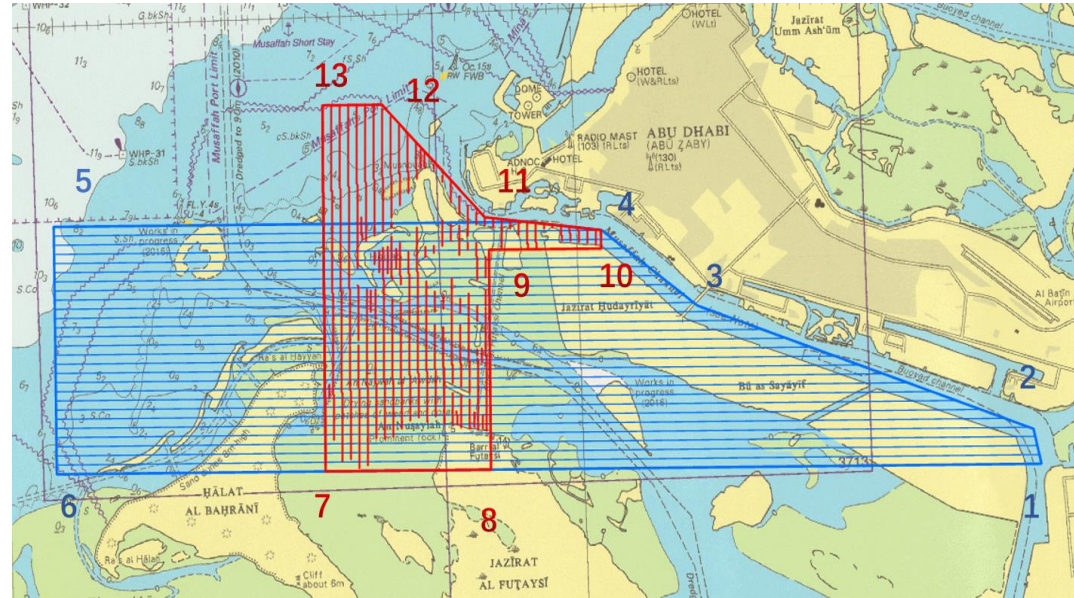
ALL INFORMATION BELOW APPLIED TO CREW8652 ONLY



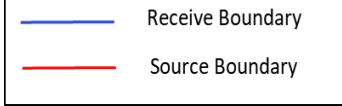
ADNOC Seismic Operation 72 Hrs. Look Ahead

For All concerned parties

No	Longitude	Latitude
1	54°27.9357'E	24°23.0404'N
2	54°27.8091'E	24°23.5332'N
3	54°22.0145'E	24°25.5447'N
4	54°20.4225'E	24°26.7208'N
5	54°10.8131'E	24°26.9897'N
6	54°10.8131'E	24°23.2687'N
7	54°15.4846'E	24°23.2982'N
8	54°18.3598'E	24°23.2982'N
9	54°18.4445'E	24°26.4818'N
10	54°20.3946'E	24°26.4389'N
11	54°18.4445'E	24°26.4818'N
12	54°16.6610'E	24°28.7016'N
13	54°15.4846'E	24°28.7016'N



- In **Blue** boundary area, the nodes are on the seabed and extra cables on the seafloor. The Node vessel will operation daytime.
- Anchoring is strictly forbidden in the **Blue** area.
- The red boundary is Air Gun operation area.



BGP Inc., CNPC Crew 8652 has started the TZ 3D seismic data acquisition in Arabian Gulf, UAE for ADNOC (Abu Dhabi National Oil Company). The operation area is shown as above:



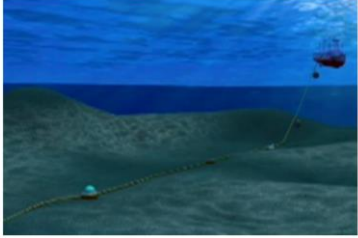
Seismic Acquisition Technique

Receiver Lines Node Deployment

- Lines of hydrophone nodes laid on seabed at 25m intervals, connected by rope. No any node will be deployed in New Musaffah Channel but will deploy nodes in Old Channel.
- Laid and recovered by node vessels running east to west.
- Each receiver line is 250m to the south of the previous one, such that the survey moves gradually from East to West.

Pinging

- A vessel runs along the line using a high frequency, low volume acoustic transducer to confirm the node positions by triangulation.

Ocean Bottom Nodes	
GPR 300 Ocean Bottom Node	
Deployment Method	
Subsurface View of Deployment	

Seismic Acquisition Technique

Source Lines

- Air 'guns' are cylinders of compressed air that is released to create a sub-surface bubble that generates a specific sound signature.
- The air guns are suspended under floats towed by a source vessel at a speed of approximately 4.5 knots



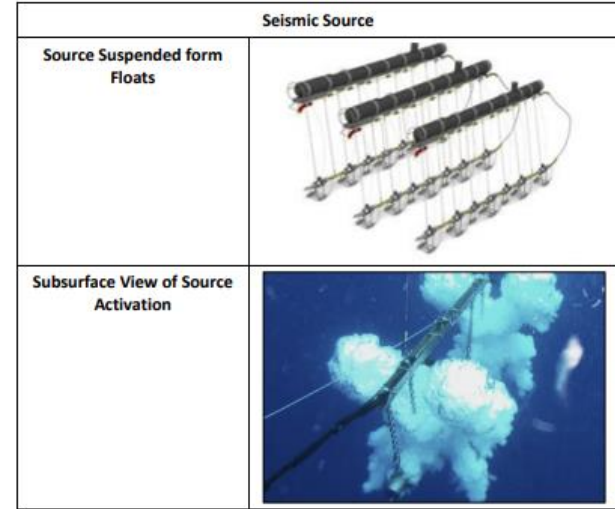
LN 101

Mini Source Boat



JHH201

Reduced Source Boat



Prior to starting a new line, the source vessel will conduct a soft start.

This gradually increases the source volume from very low volume to full volume of 1520/560/440/310 cu in over a period of 20 to 40 minutes.

Notice:

1. All parties to be aware that in the area indicated above, the seismic equipment will be deployed on the seabed.
2. Seismic source vessels will operate during day, so please keep a safe distance in the operation area. Fishing, anchoring and / or diving operations in this area are strictly forbidden.
3. All operating vessels will be in a restricted maneuverable condition during the seismic operation. All passing vessels must be prepared to change the route if advised.
4. To minimize any possible disruption in your operations, please contact us (as per vessel name in the following display) on VHF CH 75 for further movement information.

ADNOC Seismic Operation 72 Hrs Look Ahead

For All concerned parties

BGP Inc., CNPC Crew 8652 Main Vessels for the Operations



LN 101

Mini Source Boat



JHH201

Reduced Source Boat



HYWT 203

Reduced Source Boat



HAI BAO X

Source Vessel * 2



HYWT 101-108

RIB Boat



HYWT 109-118

RIB Boat



HAI ZUAN

Drilling Boat * 2



HYWT 301-308

Node Boat * 8

BGP Vessel Parameter List

Name	Gross Tonnage	Length Over All (m)	Breadth (m)	Depth (m)	POB
HAI BAO 2	252.00	38.11	8.20	2.80	22
JHH 201	48.62	19.30	6.00	1.40	6
LN101	26.85	18.00	4.50	1.40	8
HYWT203	80.30	23.79	8.00	1.60	8
HYWT101-108	8.86	10.97	3.70	0.85	8
Hai Zuan 6/7/17/18/19	8.60	10.75	3.80	1.40	6
HYWT109-118	13.1	13.80	3.86	1.3	12
HYWT301-308	80.31	23.98	6.00	2.20	14

ADNOC Seismic Operation 72 Hrs Look Ahead

For All concerned parties

Contact List:

S/N	Name	Position	Mobile
1	HYWT 307	BGP Radio Room	VHF CH 75/16 Mobile: 00971(0)56 501 1707
2	HB2	Gun Boat	VHF CH 75/16 Mobile: 00971(0)50 755 6918
3	Hou Quanli	APC-Marine	00971(0)50 371 4918
4	Wang Hongyu	APC-PR	00971(0) 50 512 2918
5	Yang Yingkuan	QHSSE	00971(0) 50 639 0633
6	Wang Yang	Coordinator	00971(0)54 714 8533
7	NG Kok Kiang (Nick)	Port Captain	00971(0)50 163 9918
8	Raymond	Assistant Port Captain	00971(0) 50 469 5021

Anything you can write email to Nick: nickashrafng@gmail.com to confirm, or call 00971(0)50 163 9918

THANKS



BGP INC., CHINA NATIONAL PETROLEUM CORPORATION