

Ref : ADM/LMN/2022/18 المرجع :  
Date: 14/04/2022 التاريخ :

**LOCAL MARINE NOTICE IN ABU DHABI**

**النشرة البحرية المحلية لإمارة أبوظبي**

**To :** All users of waterways, mariners and maritime operators in Abu Dhabi

إلى : جميع مستخدمي الممرات المائية والبحارة  
والمشغلين البحريين في أبوظبي

**Location :** Old Musaffah Channel, New Musaffah Channel & water surrounding Hudayriat and South of Umm Al Dalkh Oil Field

الموقع : قناة المصفح القديمة، قناة المصفح الجديدة،  
والمياه المحيطة بجزيرة الحديريات و جنوب  
حقل أم الدلخ النفطي

**Subject :** Offshore ADNOC 3D Seismic Survey

الموضوع : مسح أدنوك الزلزالي ثلاثي الأبعاد

With reference Local Marine Notice in Abu Dhabi Ref# ADM/LMN/2022/17 Dated 30 March 2022 regarding "Offshore ADNOC 3D Seismic Survey-Revised Survey Plan", kindly note 24 & 48 hours and 7 days lookaheads plan as attached.

بالإشارة إلى النشرة البحرية المحلية لإمارة أبوظبي المرفقة  
رقم ADM/LMN/2022/17 بتاريخ 30 مارس 2022  
بخصوص "مسح أدنوك الزلزالي ثلاثي الأبعاد- خطة المسح  
المعدلة" يرجى ملاحظة خطة البحث لمدة 24 و 48 ساعة و  
7 يوماً كما هو مرفق.

All waterways users and marine operators are required to take all necessary actions and instruct their Masters/Operators to be vigilant and stay well clear of the area of operations and adhere to following Instructions:

على جميع مستخدمي الممرات المائية والمشغلين البحريين  
اتخاذ ما يلزم وإصدار التعليمات المطلوبة لربابنة سفنهم  
ومشغلها بضرورة توخي الحذر والبقاء بعيداً عن منطقة  
العمليات والالتزام بالتعليمات التالية:

1. All concerned parties to be aware that in the area indicated, the seismic equipment will be deployed on the seabed as well as on water surface.
2. Seismic source vessels will be operated day and night during operation periods.
3. Fishing, anchoring stoppage and diving operations in this area are strictly forbidden.

1. على جميع المعنيين العلم بأنه سيتم نشر معدات المسح  
السيزيمي في قاع البحر وكذلك على سطح الماء بالمنطقة  
المشار إليها.
2. سيتم تشغيل سفن المسح السيزيمي (سفن المصدر) ليلاً  
ونهاراً خلال فترات التشغيل.
3. عمليات الصيد والرسو والتوقف والغوص في هذه  
المنطقة ممنوعة منعاً باتاً.



4. All seismic survey operation vessels will be restricted in their ability to maneuver during the seismic operations. جميع سفن عمليات المسح السيزمي ستصبح مقيدة في قدرتها على المناورة أثناء عمليات المسح الزلزالي.
5. The seismic survey operation vessels will keep clear of the vessels navigating in the channels while all other vessels should navigate safely with due care and keep clear from seismic survey vessel. ستقوم سفن عمليات المسح السيزمي بالابتعاد عن السفن المبحرة في القنوات المائية بينما يتعين على جميع السفن الأخرى الإبحار بممرات آمنة مع اتخاذ لحذر التام والابتعاد عن سفن المسح السيزمي.
6. Seismic Survey Vessels can be contacted through VHF CH 09/14/16/72 for further movement information. يمكن الاتصال بسفن المسح السيزمي من خلال VHF CH 72/16/14/09 للحصول على مزيد من المعلومات عن الحركة.
7. List of the relevant Seismic Survey Vessels and their communication channels is attached as well. مرفق أيضا قائمة بسفن المسح السيزمي المعنية وقنوات الاتصال معها.
8. This LMN to be read in conjunction with AD Ports circular/Marine Notice issued for the same project. يجب قراءة هذه النشرة المحلية بالتزامن مع التعميم الصادر من موانئ أبوظبي الخاص بنفس المشروع.

Attachement:

- Illustrative map with schedule.
- List of Seismic Survey fleet and contacts

- خريطة توضيحية مع الجدول الزمني.
- قائمة أسطول المسح السيزمي وقنوات الاتصال

سيف المهيري

المدير العام - أبوظبي البحرية

**Capt. Saif Al Mheiri**  
**Managing Director – Abu Dhabi Maritime**

# ADNOC TZ 3D SEISMIC SURVEY ACQUISITION

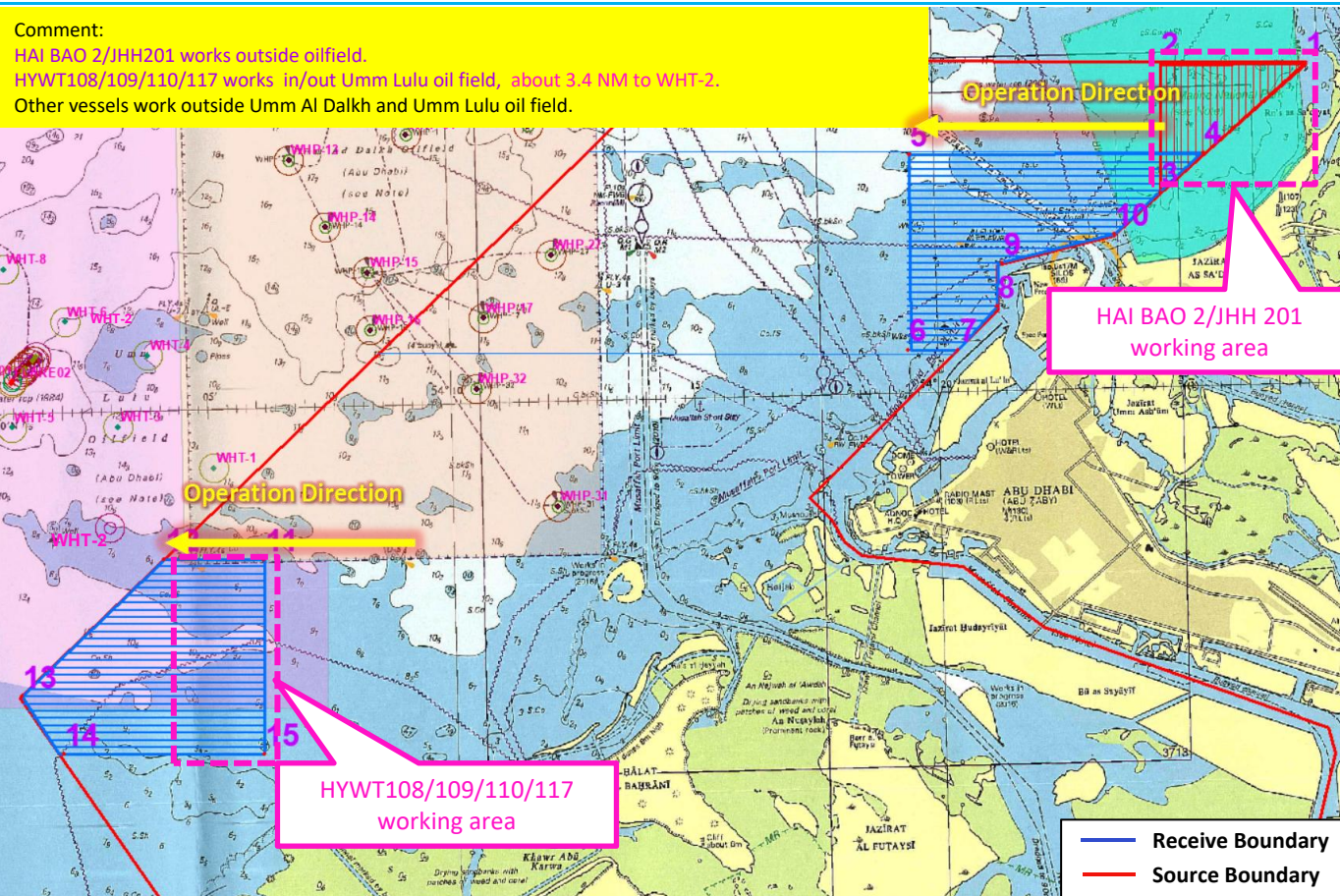
**Hudairiat Block – 24&48 Hours Look Head Plan**

**BGP CREW 8652**

**14th Apr. 2022**



Other vessels work outside Umm Al Dalkh and Umm Lulu oil field.



- In **blue** boundary area, the nodes are on the seabed and extra cables on the seafloor 24 hours.
- In **red** boundary area, the source vessel will shooting 24 hours.

SN	latitude and Longitude
1	24° 35' 59.054"N,54° 27' 39.317"E
2	24° 36' 03.110"N,54° 24' 41.831"E
3	24° 33' 37.058"N,54° 24' 37.871"E
4	24° 34' 21.288"N,54° 25' 32.337"E
5	24° 34' 26.558"N,54° 19' 30.690"E
6	24° 30' 47.499"N,54° 19' 23.136"E
7	24° 30' 46.127"N,54° 20' 25.220"E
8	24° 31' 33.751"N,54° 21' 14.406"E
9	24° 32' 22.300"N,54° 21' 21.911"E
10	24° 32' 51.676"N,54° 23' 40.278"E
11	24° 27' 08.964"N,54° 06' 07.013"E
12	24° 27' 11.463"N,54° 04' 04.649"E
13	24° 24' 40.755"N,54° 01' 06.286"E
14	24° 23' 34.789"N,54° 01' 56.148"E
15	24° 23' 29.796"N,54° 06' 02.538"E



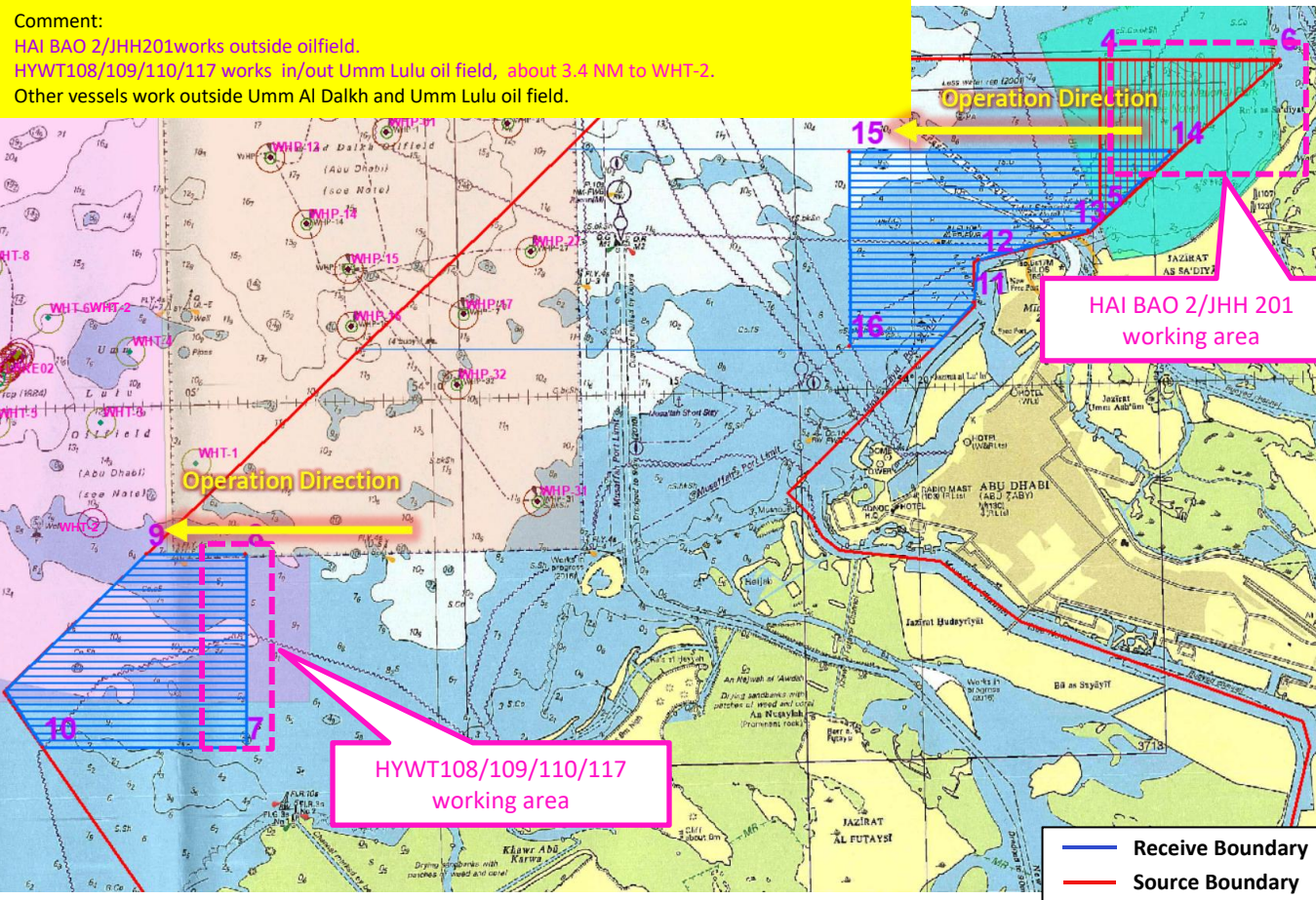
# BGP Crew 8652 Seismic Operation 48 Hours Look Ahead For All Concerned Parties

## Comment:

HAI BAO 2/JHH 201 works outside oilfield.

HYWT108/109/110/117 works in/out Umm Lulu oil field, about 3.4 NM to WHT-2.

Other vessels work outside Umm Al Dalkh and Umm Lulu oil field.



➤ In **blue** boundary area, the nodes are on the seabed and extra cables on the seafloor 48 hours.

➤ In **red** boundary area, the source vessel will shooting 48 hours.

SN15	latitude and Longitude
4	24° 36' 04.926"N, 54° 23' 57.480"E
5	24° 33' 07.464"N, 54° 24' 00.232"E
6	24° 36' 00.676"N, 54° 27' 39.361"E
7	24° 23' 29.796"N, 54° 06' 02.538"E
8	24° 27' 08.964"N, 54° 06' 07.013"E
9	24° 27' 11.463"N, 54° 04' 04.649"E
10	24° 23' 34.895"N, 54° 01' 50.830"E
11	24° 31' 33.751"N, 54° 21' 14.406"E
12	24° 32' 22.300"N, 54° 21' 21.911"E
13	24° 32' 51.716"N, 54° 23' 38.504"E
14	24° 34' 18.700"N, 54° 25' 21.170"E
15	24° 34' 27.575"N, 54° 18' 44.547"E
16	24° 30' 48.475"N, 54° 18' 38.790"E

— Receive Boundary  
— Source Boundary



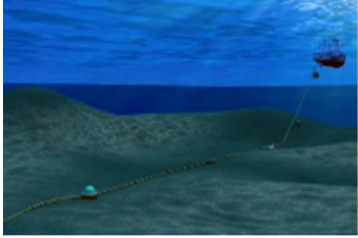
## Seismic Acquisition Technique

### Receiver Lines Node Deployment

- Lines of hydrophone nodes laid on seabed at 25m intervals, connected by rope.
- Laid and recovered by node vessels running east to west.
- Each receiver line is 250m to the south of the previous one, such that the survey moves gradually from East to West.

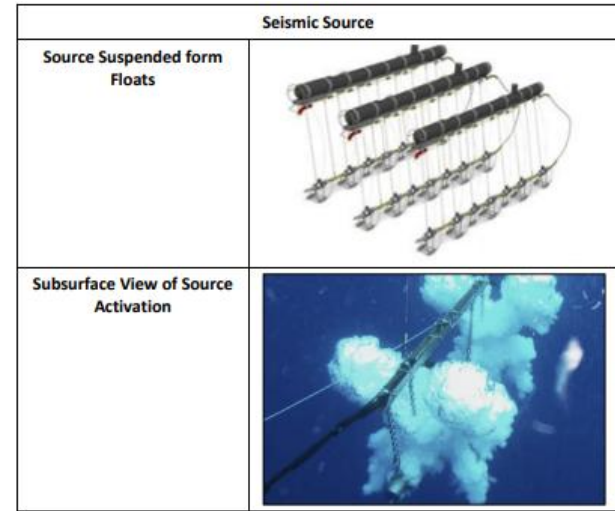
### Pinging

- A vessel runs along the line using a high frequency, low volume acoustic transducer to confirm the node positions by triangulation.

Ocean Bottom Nodes	
GPR 300 Ocean Bottom Node	
Deployment Method	
Subsurface View of Deployment	

## Source Lines

- Air 'guns' are cylinders of compressed air that is released to create a sub-surface bubble that generates a specific sound signature.
- The air guns are suspended under floats towed by a source vessel at a speed of approximately 4.5 knots



Prior to starting a new line, the source vessel will conduct a soft start.

This gradually increases the source volume from very low volume to full volume over a period of 20 to 40 minutes.

## ADNOC Seismic Operation Look Ahead

### For All concerned parties

#### Notice:

1. All parties to be aware that in the area indicated above, the seismic equipment will be deployed on the seabed.
2. Seismic source vessels will operate during day, so please keep a safe distance in the operation area. Fishing, anchoring and / or diving operations in this area are strictly forbidden.
3. All operating vessels will be in a restricted maneuverable condition during the seismic operation. All passing vessels must be prepared to change the route if advised.
4. To minimize any possible disruption in your operations, please contact us (as per vessel name in the following display) on VHF CH 75 for further movement information.



S/N	Vessel Type	Vessel	Length	Beam	Draft	Comment
1	Source Vessel	HAI BAO 2	38.1	8.2	2.1	Working outside Umm Al Dalkh oil field, outside Umm Lulu oil field
2	Source Vessel	HAI BAO 4	38.5	7.0	2.2	Working outside Umm Al Dalkh oil field, outside Umm Lulu oil field
3	Source Vessel	JHH201	19.30	6.00	0.95	Working outside Umm Al Dalkh oil field, outside Umm Lulu oil field
4	Source Vessel	LN101	18.00	4.50	1.40	Working outside Umm Al Dalkh oil field, outside Umm Lulu oil field
5	Ping Vessel	FANGLAN	17.3	5.0	0.7	29, 30 Working outside Umm Al Dalkh oil field, outside Umm Lulu oil field
6	Ping Vessel	HYWT 1XX Series - Type I	10.97	3.70	0.85	106 Working outside Umm Al Dalkh oil field, outside Umm Lulu oil field
7	Node Vessel	HYWT 1XX Series - Type I	10.97	3.70	0.85	109/108 Working in/out Umm Lulu oil field
8	Node Vessel	HYWT 1XX Series - Type II	13.8	3.6	1.2	110/117 Working in/out Umm Lulu oil field
9	Mother Vessel	Per Aspera	62.8	58.5	3.2	Working outside Umm Al Dalkh oil field, outside Umm Lulu oil field



HAI BAO 2



HAI BAO 4



JHH201



LN101



FANGLAN 29/30



HYWT 1XX Series - Type I



HYWT 1XX Series - Type II



Per Aspera

# BGP Crew 8652 Vessels Contact List

S/N	Name	Position	Location	Email	Mobile
1	Richard Bolton	ADNOC Leader-QC	Base Camp	<a href="mailto:BGP8652_ACQ_QC_1@Verif-i.team">BGP8652_ACQ_QC_1@Verif-i.team</a>	00971(0) 50 6996028
2	Captain Mohamed Mahrous	ADNOC Marine-QC	Per Aspera(Mother Vessel)	<a href="mailto:BGP8652_MAR_QC@Verif-i.team">BGP8652_MAR_QC@Verif-i.team</a>	00971(0) 50 3255364
3	Ding Guandong	Project Manager	Base Camp	<a href="mailto:dingguandong@bgpoffshore.com">dingguandong@bgpoffshore.com</a>	00971(0) 50 7403918
4	Wang Jinming	Party Chief	Base Camp	<a href="mailto:wangjinming@bgp.com.cn">wangjinming@bgp.com.cn</a>	00971(0) 50 8378918
5	Hou Quanli	AQ Party Chief	Base Camp	<a href="mailto:houquanli@bgpoffshore.com">houquanli@bgpoffshore.com</a>	00971(0) 50 3714918
6	Alex	Leader HSE	Base Camp	<a href="mailto:adnoc8652_hse@bgpoffshore.com">adnoc8652_hse@bgpoffshore.com</a>	00971(0) 56 2524665
7	Yan Heng	Small Craft Manager	BGPO Office	<a href="mailto:yanheng@bgpoffshore.com">yanheng@bgpoffshore.com</a>	00971(0) 50 5203918
8	NG Kok Kiang (Nick)	Port Captain	Fly Camp	<a href="mailto:swc.portcaptain@bgpoffshore.com">swc.portcaptain@bgpoffshore.com</a>	00971(0) 50 163 9918
9	Wang Yang	APC	Per Aspera	<a href="mailto:wangyangbgp@163.com">wangyangbgp@163.com</a>	00971(0)54 714 8533
10	HYWT 307	BGP Radio Room	HYWT307		VHF CH 75/16 Mobile: 00971(0)56 501 1707
11	HAI BAO 4	Gun Boat	HAI BAO 4	<a href="mailto:haibao4@bgpoffshore.com">haibao4@bgpoffshore.com</a>	+4723677000
12	HAI BAO 2	Gun Boat	HAI BAO 2	<a href="mailto:haibao2@bgpoffshore.com">haibao2@bgpoffshore.com</a>	00971(0)50 755 6918

Anything you can write email to Nick: [swc.portcaptain@bgpoffshore.com](mailto:swc.portcaptain@bgpoffshore.com) to confirm, or call 00971(0)50 163 9918

# ADNOC TZ 3D SEISMIC SURVEY ACQUISITION

**Hudairiat Block – 7 Days Look Head Plan**

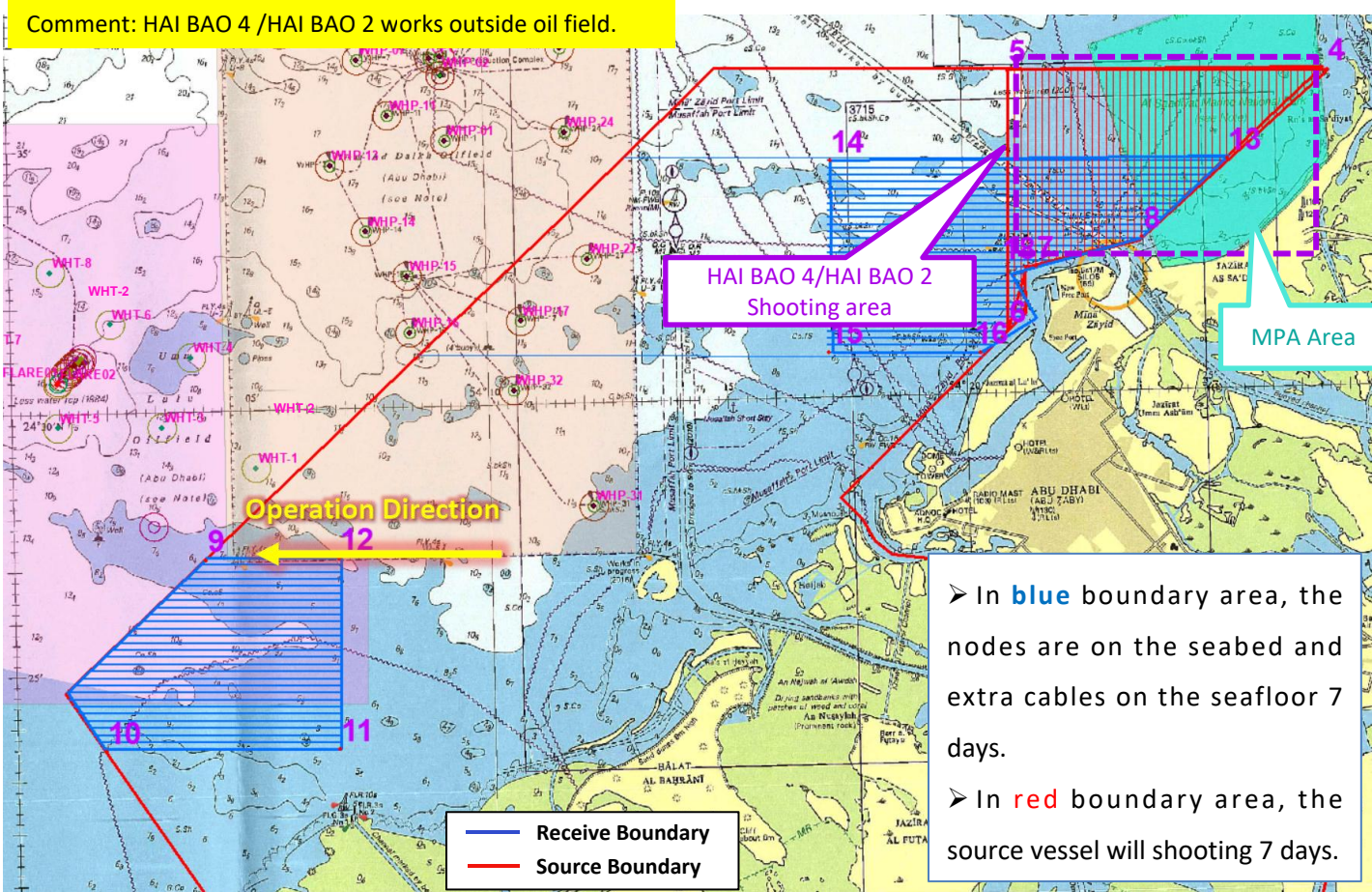
**BGP CREW 8652**

**14th Apr. 2022**



# BGP Crew 8652 Seismic Operation 7 Days Look Ahead For All Concerned Parties

Comment: HAI BAO 4 /HAI BAO 2 works outside oil field.



➤ In **blue** boundary area, the nodes are on the seabed and extra cables on the seafloor 7 days.

➤ In **red** boundary area, the source vessel will shooting 7 days.

SN	latitude and Longitude
4	24° 36' 00.676"N, 54° 27' 39.361"E
5	24° 36' 07.287"N, 54° 20' 59.938"E
6	24° 31' 09.881"N, 54° 20' 52.473"E
7	24° 32' 23.349"N, 54° 21' 29.483"E
8	24° 32' 54.446"N, 54° 23' 43.459"E
9	24° 27' 08.649"N, 54° 04' 03.250"E
10	24° 23' 31.992"N, 54° 01' 53.865"E
11	24° 23' 28.923"N, 54° 06' 45.078"E
12	24° 27' 08.088"N, 54° 06' 49.574"E
13	24° 34' 22.099"N, 54° 25' 32.359"E
14	24° 34' 29.541"N, 54° 17' 14.923"E
15	24° 30' 50.473"N, 54° 17' 07.435"E
16	24° 30' 46.284"N, 54° 20' 18.125"E
17	24° 31' 33.751"N, 54° 21' 14.406"E
18	24° 32' 22.418"N, 54° 21' 16.588"E





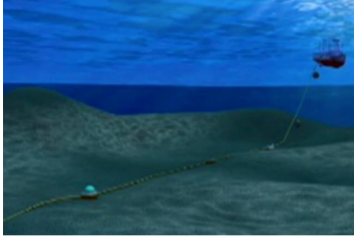
## Seismic Acquisition Technique

### Receiver Lines Node Deployment

- Lines of hydrophone nodes laid on seabed at 25m intervals, connected by rope.
- Laid and recovered by node vessels running east to west.
- Each receiver line is 250m to the south of the previous one, such that the survey moves gradually from East to West.

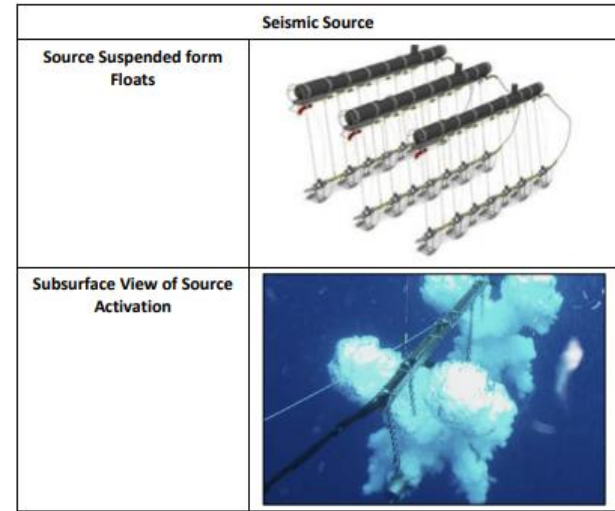
### Pinging

- A vessel runs along the line using a high frequency, low volume acoustic transducer to confirm the node positions by triangulation.

Ocean Bottom Nodes	
GPR 300 Ocean Bottom Node	
Deployment Method	
Subsurface View of Deployment	

## Source Lines

- Air 'guns' are cylinders of compressed air that is released to create a sub-surface bubble that generates a specific sound signature.
- The air guns are suspended under floats towed by a source vessel at a speed of approximately 4.5 knots



Prior to starting a new line, the source vessel will conduct a soft start.

This gradually increases the source volume from very low volume to full volume of 1520 cu in over a period of 20 to 40 minutes.

### Notice:

1. All parties to be aware that in the area indicated above, the seismic equipment will be deployed on the seabed.
2. Seismic source vessels will operate during day, so please keep a safe distance in the operation area. Fishing, anchoring and / or diving operations in this area are strictly forbidden.
3. All operating vessels will be in a restricted maneuverable condition during the seismic operation. All passing vessels must be prepared to change the route if advised.
4. To minimize any possible disruption in your operations, please contact us (as per vessel name in the following display) on VHF CH 75 for further movement information.

S/N	Vessel Type	Vessel	Length	Beam	Draft	Comment
1	Source Vessel	HAI BAO 2	38.1	8.2	2.1	Working outside oil field
2	Source Vessel	HAI BAO 4	38.5	7.0	2.2	Working outside oil field
3	Source Vessel	JHH201	19.30	6.00	0.95	Working outside oil field
4	Source Vessel	LN101	18.00	4.50	1.40	Working outside oil field
5	Ping Vessel	FANGLAN	17.3	5.0	0.7	29, 30 Working outside oil field
6	Ping Vessel	HYWT 1XX Series - Type I	10.97	3.70	0.85	106 Working outside oil field
7	Scouting Vessel	HYWT 1XX Series - Type I	10.97	3.70	0.85	107 (Working outside Umm Al Dalkh oil field)
8	Node Vessel	HYWT 1XX Series - Type I	10.97	3.70	0.85	109/108 Working in/out Umm Lulu oil field
9	Node Vessel	HYWT 1XX Series - Type II	13.8	3.6	1.2	110/117 Working in/out Umm Lulu oil field
10	Mother Vessel	Per Aspera	62.8	58.5	3.2	Working outside Umm Al Dalkh oil field, outside Umm Lulu oil field



HAI BAO 2



HAI BAO 4



JHH201



LN101



FANGLAN 29/30



HYWT 1XX Series - Type I



HYWT 1XX Series - Type II



Per Aspera



# BGP Crew 8652 Vessels Contact List

S/N	Name	Position	Location	Email	Mobile
1	Richard Bolton	ADNOC Leader-QC	Base Camp	<a href="mailto:BGP8652_ACQ_QC_1@Verif-i.team">BGP8652_ACQ_QC_1@Verif-i.team</a>	00971(0) 50 6996028
2	Captain Mohamed Mahrous	ADNOC Marine-QC	Per Aspera(Mother Vessel)	<a href="mailto:BGP8652_MAR_QC@Verif-i.team">BGP8652_MAR_QC@Verif-i.team</a>	00971(0) 50 3255364
3	Ding Guandong	Project Manager	Base Camp	<a href="mailto:dingguandong@bgpoffshore.com">dingguandong@bgpoffshore.com</a>	00971(0) 50 7403918
4	Wang Jinming	Party Chief	Base Camp	<a href="mailto:wangjinming@bgp.com.cn">wangjinming@bgp.com.cn</a>	00971(0) 50 8378918
5	Hou Quanli	AQ Party Chief	Base Camp	<a href="mailto:houquanli@bgpoffshore.com">houquanli@bgpoffshore.com</a>	00971(0) 50 3714918
6	Alex	Leader HSE	Base Camp	<a href="mailto:adnoc8652_hse@bgpoffshore.com">adnoc8652_hse@bgpoffshore.com</a>	00971(0) 56 2524665
7	Yan Heng	Small Craft Manager	BGPO Office	<a href="mailto:yanheng@bgpoffshore.com">yanheng@bgpoffshore.com</a>	00971(0) 50 5203918
8	NG Kok Kiang (Nick)	Port Captain	Fly Camp	<a href="mailto:swc.portcaptain@bgpoffshore.com">swc.portcaptain@bgpoffshore.com</a>	00971(0) 50 163 9918
9	Wang Yang	APC	Per Aspera	<a href="mailto:wangyangbgp@163.com">wangyangbgp@163.com</a>	00971(0)54 714 8533
10	HYWT 307	BGP Radio Room	HYWT307		VHF CH 75/16 Mobile: 00971(0)56 501 1707
11	HAI BAO 4	Gun Boat	HAI BAO 4	<a href="mailto:haibao4@bgpoffshore.com">haibao4@bgpoffshore.com</a>	+4723677000
12	HAI BAO 2	Gun Boat	HAI BAO 2	<a href="mailto:haibao2@bgpoffshore.com">haibao2@bgpoffshore.com</a>	00971(0)50 755 6918

Anything you can write email to Nick: [swc.portcaptain@bgpoffshore.com](mailto:swc.portcaptain@bgpoffshore.com) to confirm, or call 00971(0)50 163 9918



## Navigational Warning

**PROJECT:** ADNOC 3D-Seismic Survey.

**Scope of Work:** Seismic Survey Operation.

**TO:** MC CONTROL / Das VTIS / Musaffah Channel

**FROM:** ADNOC MARINE REPRESENTATIVES

**DATE:** 14/04/2022 AT 4:00 HRS

**SUBJECT:** "Seismic Survey" – NAVIGATIONAL WARNING.

**PLEASE BE INFORMED THAT THE FOLLOWING VESSELS IS CONDUCTING 24 HOURS SURVEY OPERATIONS ON THE Umm Al Dalkh and Umm Lulu**

**NODE VESSELS:**

- HYWT108/109/110/117 works **in/out Umm Lulu oil field**, about 3.4 NM to WHT-2. Refer to figure 1.
- HYWT114/116/301/302, BGPR 016/024/008 works outside oil field, about 13 NM away from the platform WHP-24. Refer to figure 1.

**SHOOTING VESSELS:**

- HAI BAO 2/JHH201: Shooting outside oil field, about 13 NM away from the platform WHP-24. Refer to figure 2.

**Scouting VESSELS:**

- 

**PING VESSELS:**

- HYWT106, FANGLAN 29/30. The ping vessels operate **outside oil field**, about 13 NM away from the platform WHP-24. Refer to figure 3.

**Multibeam, bathymetric, survey Vessels**

Kindly issue a navigational warning to all vessels operating within this area to maintain 500 meters CPA from the above-mentioned survey vessels.

Survey Vessels can be contacted on VHF Ch. 9, 14, 16, 72 for further information.

NOTE: ANY VESSEL INTENDING TO CARRY OUT DIVING, ANCHORING OR UNDERWATER OPERATIONS IN THESE AREAS SHALL NOTIFY Per Aspera in advance till further notice.

**Thanks & Best Regards**

**Captain Mohamed Mahrous**

Adnoc Marine QC Reps Tel: 00971(0) 50 3255364

Email: BGP8652\_MAR\_QC@Verif-i.team

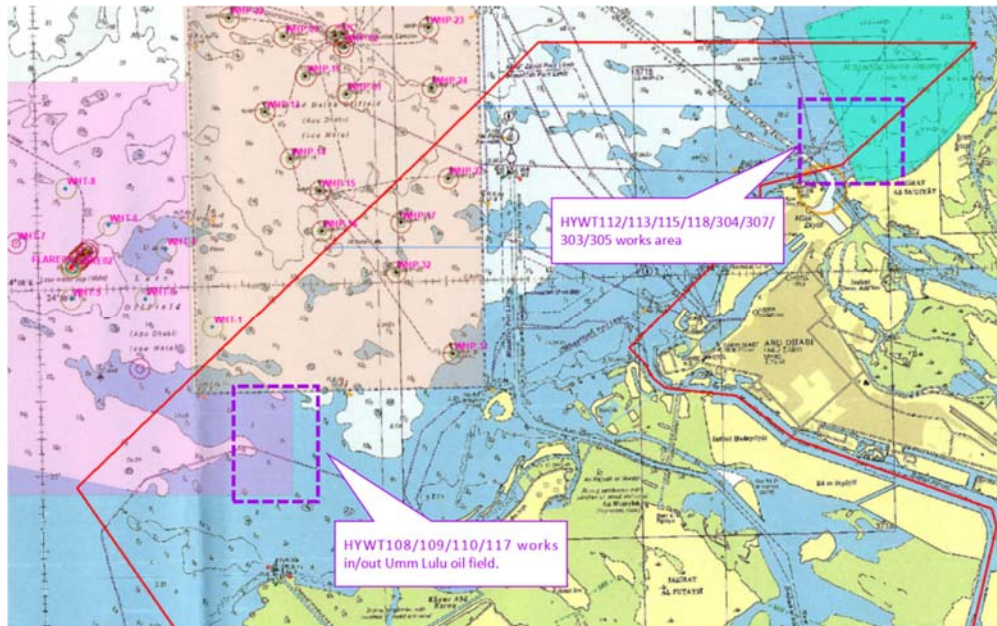


Figure 1 HYWT108/109/110/117/114/116/301/302, BGPR 016/024/008 Work Area

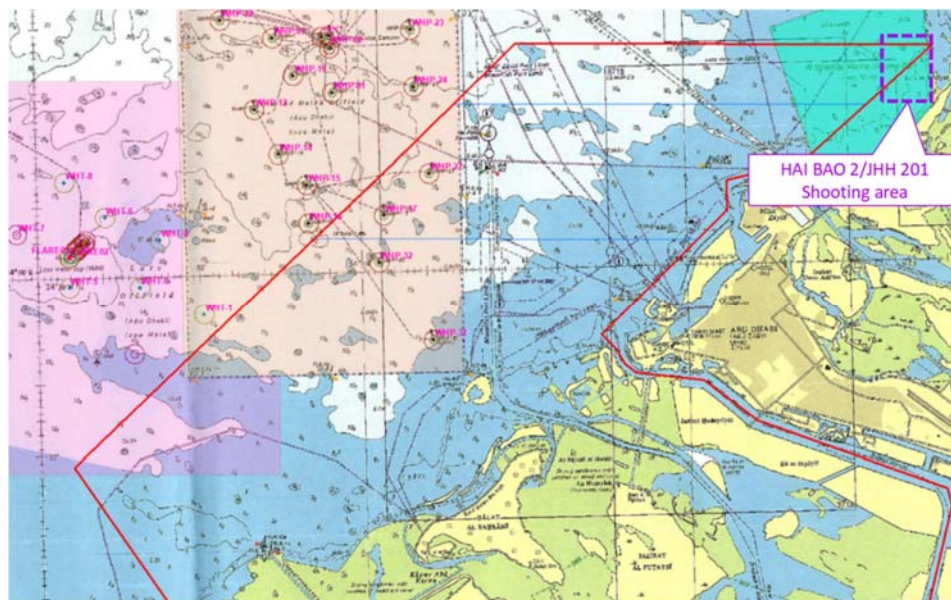
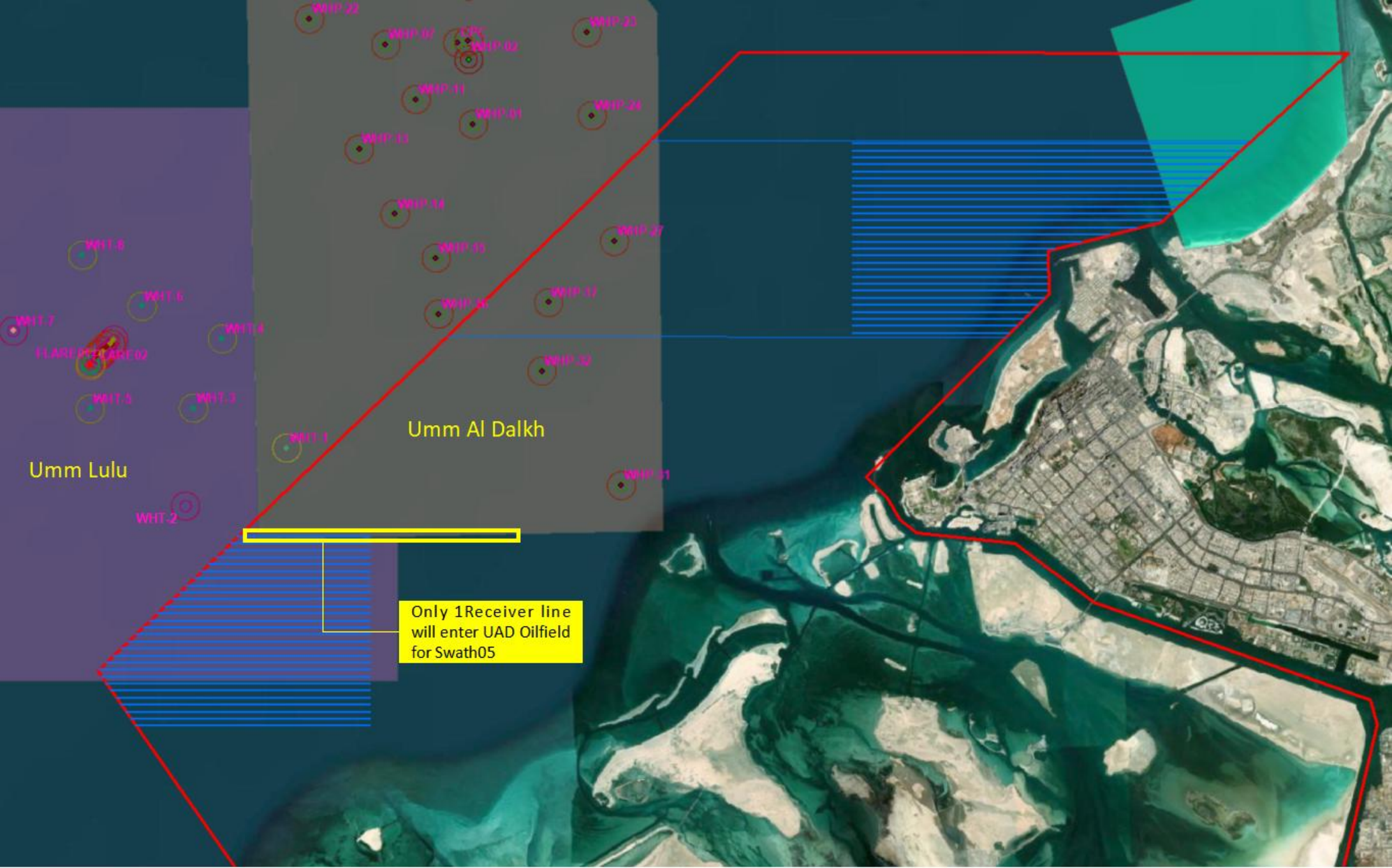


Figure 2 HAI BAO2/JHH201 Work Area



Figure 3 HYWT106, FANGLAN29/30 Work Area





# THANKS



BGP INC., CHINA NATIONAL PETROLEUM CORPORATION