



Ref : ADM/LMN/2024/57 : المرجع
Date: 04/06/2024 : التاريخ

LOCAL MARINE NOTICE IN ABU DHABI

النشرة البحرية المحلية لإمارة أبوظبي

To : All users of waterways, mariners and maritime operators in Abu Dhabi

إلى : جميع مستخدمي الممرات المائية والبحارة
والمشغلين البحريين في أبوظبي

Location : Al Aliah South and East Channels, Abu Dhabi

الموقع : القنوات المائية الممتدة جنوب وشرق جزيرة العالية،
أبوظبي

Subject : New Aids to Navigation Installation

الموضوع : تركيب مساعدات ملاحية جديدة

Furthering our commitment to both service excellence and navigational safety in Abu Dhabi's waterways, we are pleased to announce the successful deployment of 48 Aids to Navigation (AtoNs) marking the Al Aliah South and East Channels. The specific locations of these vital aids are presented in the attached map.

في إطار التزامنا بالتميز في تقديم الخدمات وتعزيز السلامة الملاحية في الممرات المائية بإمارة أبوظبي، يسرنا أن نعلن عن نجاحنا في تركيب 48 مساعدة ملاحية لتحديد القنوات المائية الممتدة جنوب وشرق جزيرة العالية. تتضمن الخريطة التوضيحية المرفقة المواقع الخاصة بهذه المساعدات الملاحية.

All Mariners/Marine Operators are advised to keep a sharp lookout and navigate with caution while transiting through this area.

يُنصح جميع البحارة والمشغلين البحريين بتوخي الحيلة والإبحار بحذر أثناء المرور عبر هذه المنطقة.

Coordinates and specification of new AtoNs are attached.

يمكنكم الاطلاع على إحداثيات الموقع ومواصفات المساعدات الملاحية الجديدة في الجدول المرفق.

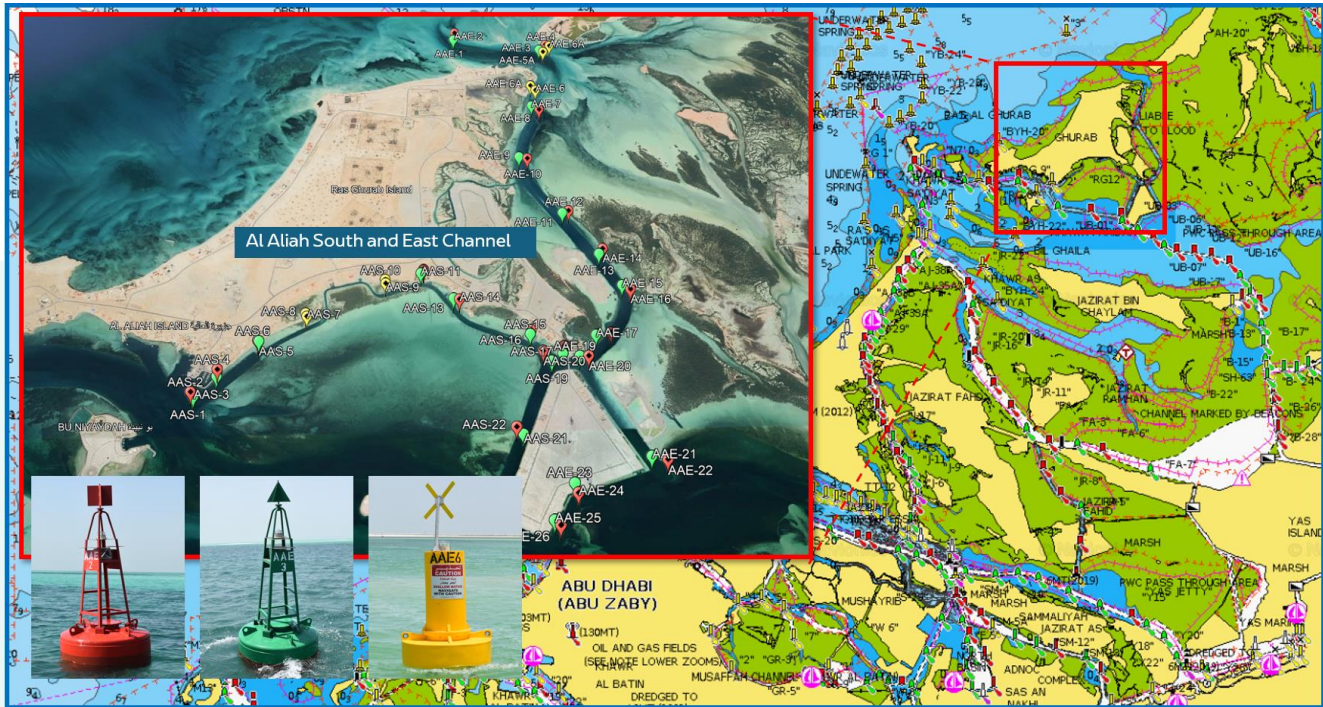
سيف المهيري

الرئيس التنفيذي - أبوظبي البحرية

Capt. Saif Al Mheiri
CEO - Abu Dhabi Maritime



الخريطة التوضيحية وإحداثيات المواقع Illustrative Map and coordinates



AL ALIAH SOUTH # ID	Position (Lat/Long)	Type	Light Characteristics	Instructions
AAS-1	24 36.080 N 054 31.396 E	Lateral Buoy - GREEN	FL G 3s	New Buoy Installation – New Channel
AAS-2	24 36.104 N 054 31.379 E	Lateral Buoy - RED	FL R 3s	New Buoy Installation – New Channel
AAS-3	24 36.181 N 054 31.505 E	Lateral Buoy - GREEN	FL G 3s	New Buoy Installation – New Channel
AAS-4	24 36.218 N 054 31.505 E	Lateral Buoy - RED	FL R 3s	New Buoy Installation – New Channel
AAS-5	24 36.365 N 054 31.710 E	Lateral Buoy - GREEN	FL G 3s	New Buoy Installation – New Channel
AAS-6	24 36.368 N 054 31.704 E	Lateral Buoy - RED	FL R 3s	New Buoy Installation – New Channel
AAS-7	24 36.496 N 054 31.957 E	Special Mark/Signage Buoy	FL Y 5s	New Buoy Installation – New Channel
AAS-8	24 36.513 N 054 31.950 E	Special Mark/Signage Buoy	FL Y 5s	New Buoy Installation – New Channel
AAS-9	24 36.694 N 054 32.380 E	Special Mark/Signage Buoy	FL Y 5s	New Buoy Installation – New Channel
AAS-10	24 36.698 N 054 32.377 E	Special Mark/Signage Buoy	FL Y 5s	New Buoy Installation – New Channel
AAS-11	24 36.735 N 054 32.574 E	Lateral Buoy - GREEN	FL G 3s	New Buoy Installation – New Channel
AAS-12	24 36.681 N 054 32.046 E	Lateral Buoy - RED	FL R 3s	New Buoy Installation – New Channel
AAS-13	24 36.584 N 054 32.748 E	Lateral Buoy - GREEN	FL G 3s	New Buoy Installation – New Channel
AAS-14	24 36.578 N 054 32.780 E	Lateral Buoy - GREEN	FL G 3s	New Buoy Installation – New Channel
AAS-15	24 36.378 N 054 32.147 E	Lateral Buoy - RED	FL R 3s	New Buoy Installation – New Channel
AAS-16	24 36.400 N 054 33.154 E	Lateral Buoy - GREEN	FL G 3s	New Buoy Installation – New Channel
AAS-17	24 36.270 N 054 33.309 E	Lateral Buoy - RED	FL R 3s	New Buoy Installation – New Channel
AAS-18	24 36.311 N 054 33.321 E	Lateral Buoy - GREEN	FL G 3s	New Buoy Installation – New Channel
AAS-19	24 36.233 N 054 33.248 E	Lateral Buoy - RED	FL R 3s	New Buoy Installation – New Channel
AAS-20	24 36.286 N 054 33.280 E	Lateral Buoy - GREEN	FL G 3s	New Buoy Installation – New Channel
AAS-21	24 35.865 N 054 33.073 E	Lateral Buoy - RED	FL R 3s	New Buoy Installation – New Channel
AAS-22	24 35.902 N 054 33.041 E	Lateral Buoy - RED	FL R 3s	New Buoy Installation – New Channel



AL ALIAH EAST # ID	Position (Lat/Long)	Type	Light Characteristics	Instructions
AAE-2	24 38.387 N 054 32.817 E	Lateral Buoy - RED	FL R 3s	New Buoy Installation – New Channel
AAE-3	24 38.241 N 054 33.352 E	Lateral Buoy - GREEN	FL G 3s	New Buoy Installation – New Channel
AAE-4	24 38.280 N 054 33.395 E	Lateral Buoy - RED	FL R 3s	New Buoy Installation – New Channel
AAE-5A	24 38.223 N 054 33.376 E	Special Mark/Signage Buoy	FL Y 5s	New Buoy Installation – New Channel
AAE-5	24 37.965 N 054 33.275 E	Special Mark/Signage Buoy	FL Y 5s	New Buoy Installation – New Channel
AAE-6A	24 38.285 N 054 33.413 E	Special Mark/Signage Buoy	FL Y 5s	New Buoy Installation – New Channel
AAE-6	24 37.930 N 054 33.303 E	Special Mark/Signage Buoy	FL Y 5s	New Buoy Installation – New Channel
AAE-7	24 37.815 N 054 33.269 E	Lateral Buoy - GREEN	FL G 3s	New Buoy Installation – New Channel
AAE-8	24 37.787 N 054 33.314 E	Lateral Buoy - RED	FL R 3s	New Buoy Installation – New Channel
AAE-9	24 37.456 N 054 33.167 E	Lateral Buoy - GREEN	FL G 3s	New Buoy Installation – New Channel
AAE-10	24 37.445 N 054 33.215 E	Lateral Buoy - RED	FL R 3s	New Buoy Installation – New Channel
AAE-11	24 37.084 N 054 33.387 E	Lateral Buoy - GREEN	FL G 3s	New Buoy Installation – New Channel
AAE-12	24 37.097 N 054 33.423 E	Lateral Buoy - RED	FL R 3s	New Buoy Installation – New Channel
AAE-13	24 36.829 N 054 33.565 E	Lateral Buoy - GREEN	FL G 3s	New Buoy Installation – New Channel
AAE-14	24 36.859 N 054 33.589 E	Lateral Buoy - RED	FL R 3s	New Buoy Installation – New Channel
AAE-15	24 36.642 N 054 33.668 E	Lateral Buoy - GREEN	FL G 3s	New Buoy Installation – New Channel
AAE-16	24 36.618 N 054 33.771 E	Lateral Buoy - RED	FL R 3s	New Buoy Installation – New Channel
AAE-17	24 36.367 N 054 33.494 E	Lateral Buoy - GREEN	FL G 3s	New Buoy Installation – New Channel
AAE-18	24 36.392 N 054 33.572 E	Lateral Buoy - RED	FL R 3s	New Buoy Installation – New Channel
AAE-19	24 36.256 N 054 33.396 E	Lateral Buoy - GREEN	FL G 3s	New Buoy Installation – New Channel
AAE-20	24 36.256 N 054 33.443 E	Lateral Buoy - RED	FL R 3s	New Buoy Installation – New Channel
AAE-21	24 35.750 N 054 33.696 E	Lateral Buoy - GREEN	FL G 3s	New Buoy Installation – New Channel
AAE-22	24 35.734 N 054 33.772 E	Lateral Buoy - RED	FL R 3s	New Buoy Installation – New Channel
AAE-23	24 35.632 N 054 33.304 E	Lateral Buoy - GREEN	FL G 3s	New Buoy Installation – New Channel
AAE-24	24 35.587 N 054 33.317 E	Lateral Buoy - RED	FL R 3s	New Buoy Installation – New Channel
AAE-25	24 35.467 N 054 33.191 E	Lateral Buoy - GREEN	FL G 3s	New Buoy Installation – New Channel
AAE-26	24 35.445 N 054 33.218 E	Lateral Buoy - RED	FL R 3s	New Buoy Installation – New Channel