



Ref : ADM/LMN/2025/43 المرجع :
Date: 15/05/2025 التاريخ :

LOCAL MARINE NOTICE IN ABU DHABI

النشرة البحرية المحلية لإمارة أبوظبي

To : All users of waterways, mariners and
maritime operators in Abu Dhabi

إلى : جميع مستخدمي الممرات المائية والبحارة
والمشغلين البحريين في أبوظبي

Location : Yas Inner East and Yas Inner
West Channels, Abu Dhabi

الموقع : قناة ياس الداخلية شرق وقناة ياس الداخلية غرب،
أبوظبي

Subject : New Aids to Navigation
Installation

الموضوع : تركيب مساعدات ملاحة جديدة

Furthering our commitment to both service excellence and navigational safety in Abu Dhabi's waterways, we are pleased to announce the successful deployment of 70 Aids to Navigation (AtoNs) marking Yas Inner East and Yas Inner West Channels. The specific locations of these vital aids are presented in the attached map.

في إطار التزامنا بالتميز في تقديم الخدمات وتعزيز السلامة الملاحة في الممرات المائية بإمارة أبوظبي، يسرنا أن نعلن عن نجاحنا في تركيب 70 مساعدة ملاحة لتحديد قناة ياس الداخلية شرق وقناة ياس الداخلية غرب. تتضمن الخريطة التوضيحية المرفقة المواقع الخاصة بهذه المساعدات الملاحة.

All Mariners/Marine Operators are advised to keep a sharp lookout and navigate with caution while transiting through this area.

ينصح جميع البحارة والمشغلين البحريين بتوخي الحيلة والإبحار بحذر أثناء المرور عبر هذه المنطقة.

Coordinates and specifications of new AtoNs are attached.

يمكنكم الاطلاع على إحداثيات الموقع ومواصفات المساعدات الملاحة الجديدة في الجدول المرفق.

سيف المهيري

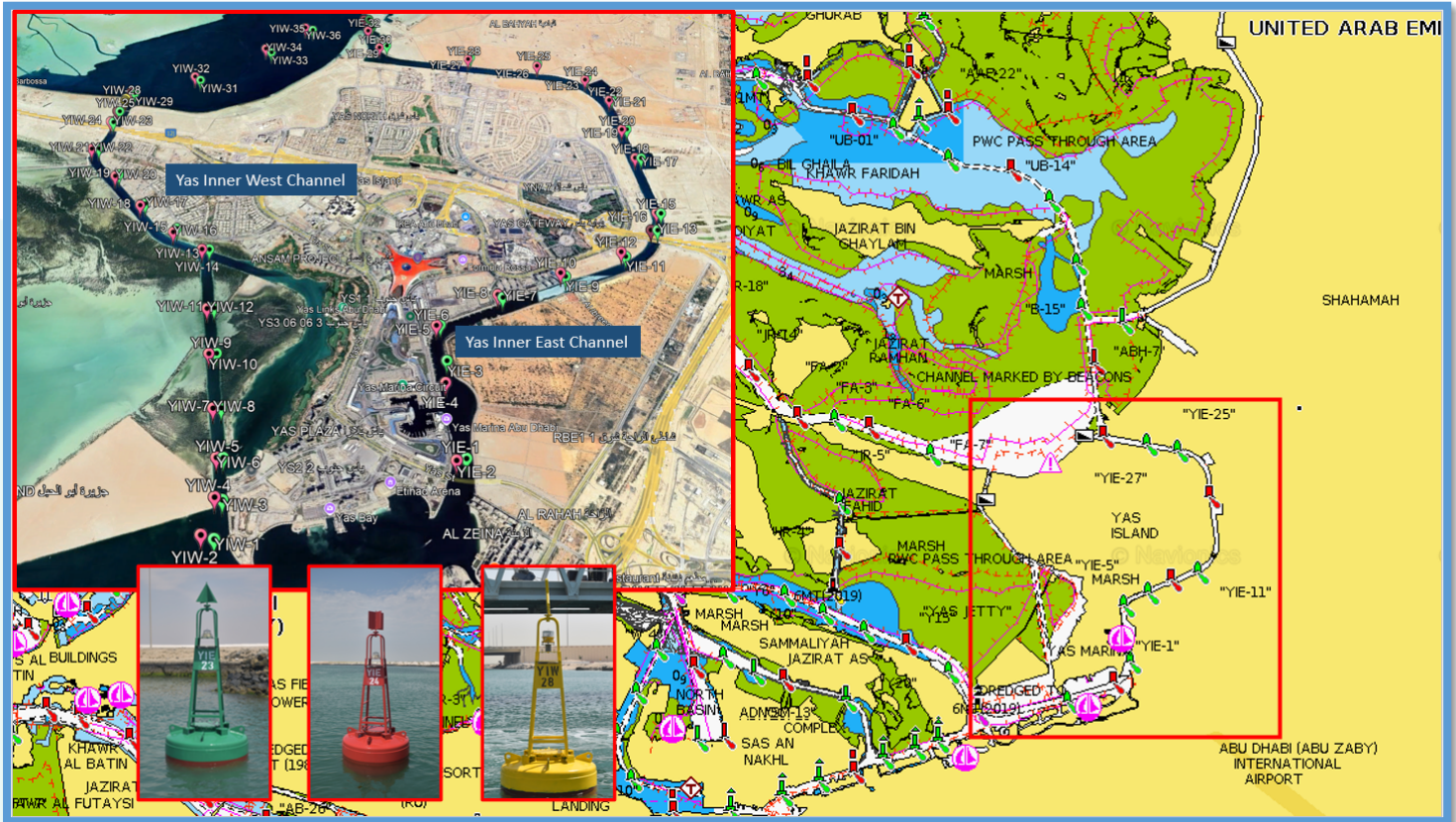
الرئيس التنفيذي - أبوظبي البحرية

Capt. Saif Al Mheiri
CEO - Abu Dhabi Maritime



الخريطة التوضيحية وإحداثيات الموقع

Illustrative Map and coordinates





Yas Inner East # ID	Latitude	Longitude	Type	Flash Characteristics	Instructions
YIE-1	24° 27.691' N	054° 36.695' E	Lateral Buoy - Green	FL G 3S	New Buoy Installation - New Channel
YIE-2	24° 27.681' N	054° 36.642' E	Lateral Buoy - Red	FL R 3s	New Buoy Installation - New Channel
YIE-3	24° 28.275' N	054° 36.628' E	Lateral Buoy - Green	FL G 3S	New Buoy Installation - New Channel
YIE-4	24° 28.136' N	054° 36.612' E	Lateral Buoy - Red	FL R 3s	New Buoy Installation - New Channel
YIE-5	24° 28.512' N	054° 36.604' E	Lateral Buoy - Green	FL G 3S	New Buoy Installation - New Channel
YIE-6	24° 28.509' N	054° 36.580' E	Lateral Buoy - Red	FL R 3s	New Buoy Installation - New Channel
YIE-7	24° 28.704' N	054° 36.992' E	Lateral Buoy - Green	FL G 3S	New Buoy Installation - New Channel
YIE-8	24° 28.725' N	054° 36.963' E	Lateral Buoy - Red	FL R 3s	New Buoy Installation - New Channel
YIE-9	24° 28.856' N	054° 37.393' E	Lateral Buoy - Green	FL G 3S	New Buoy Installation - New Channel
YIE-10	24° 28.884' N	054° 37.366' E	Lateral Buoy - Red	FL R 3s	New Buoy Installation - New Channel
YIE-11	24° 29.006' N	054° 37.792' E	Lateral Buoy - Green	FL G 3S	New Buoy Installation - New Channel
YIE-12	24° 29.042' N	054° 37.770' E	Lateral Buoy - Red	FL R 3s	New Buoy Installation - New Channel
YIE-13	24° 29.214' N	054° 38.036' E	Lateral Buoy - Green	FL G 3S	New Buoy Installation - New Channel
YIE-14	24° 29.214' N	054° 37.993' E	Lateral Buoy - Red	FL R 3s	New Buoy Installation - New Channel
YIE-15	24° 29.352' N	054° 38.088' E	Lateral Buoy - Green	FL G 3S	New Buoy Installation - New Channel
YIE-16	24° 29.358' N	054° 38.060' E	Lateral Buoy - Red	FL R 3s	New Buoy Installation - New Channel
YIE-17	24° 29.838' N	054° 38.058' E	Lateral Buoy - Green	FL G 3S	New Buoy Installation - New Channel
YIE-18	24° 29.840' N	054° 38.017' E	Lateral Buoy - Red	FL R 3s	New Buoy Installation - New Channel
YIE-19	24° 30.113' N	054° 38.013' E	Lateral Buoy - Green	FL G 3S	New Buoy Installation - New Channel
YIE-20	24° 30.112' N	054° 37.977' E	Lateral Buoy - Red	FL R 3s	New Buoy Installation - New Channel
YIE-21	24° 30.428' N	054° 37.966' E	Lateral Buoy - Green	FL G 3S	New Buoy Installation - New Channel
YIE-22	24° 30.409' N	054° 37.942' E	Lateral Buoy - Red	FL R 3s	New Buoy Installation - New Channel
YIE-23	24° 30.653' N	054° 37.822' E	Lateral Buoy - Green	FL G 3S	New Buoy Installation - New Channel
YIE-24	24° 30.629' N	054° 37.802' E	Lateral Buoy - Red	FL R 3s	New Buoy Installation - New Channel
YIE-25	24° 30.802' N	054° 37.472' E	Lateral Buoy - Green	FL G 3S	New Buoy Installation - New Channel
YIE-26	24° 30.783' N	054° 37.463' E	Lateral Buoy - Red	FL R 3s	New Buoy Installation - New Channel
YIE-27	24° 30.882' N	054° 36.970' E	Lateral Buoy - Green	FL G 3S	New Buoy Installation - New Channel
YIE-28	24° 30.861' N	054° 36.948' E	Lateral Buoy - Red	FL R 3s	New Buoy Installation - New Channel
YIE-29	24° 31.017' N	054° 36.333' E	Lateral Buoy - Green	FL G 3S	New Buoy Installation - New Channel
YIE-30	24° 30.997' N	054° 36.275' E	Lateral Buoy - Red	FL R 3s	New Buoy Installation - New Channel
YIE-31	24° 31.241' N	054° 36.220' E	Lateral Buoy - Green	FL G 3S	New Buoy Installation - New Channel
YIE-32	24° 31.198' N	054° 36.188' E	Lateral Buoy - Red	FL R 3s	New Buoy Installation - New Channel
YIE-33	24° 31.337' N	054° 36.197' E	Lateral Buoy - Green	FL G 3S	New Buoy Installation - New Channel
YIE-34	24° 31.338' N	054° 36.158' E	Lateral Buoy - Red	FL R 3s	New Buoy Installation - New Channel

Yas Inner West # ID	Latitude	Longitude	Type	Flash Characteristics	Instructions
YIW-1	24° 27' 16.47" N	54° 35' 24.26" E	Lateral Buoy - Green	FL G 3S	New Buoy Installation - New Channel
YIW-2	24° 27' 17.72" N	54° 35' 20.13" E	Lateral Buoy - Red	FL R 3s	New Buoy Installation - New Channel
YIW-3	24° 27' 28.28" N	54° 35' 25.50" E	Lateral Buoy - Green	FL G 3S	New Buoy Installation - New Channel
YIW-4	24° 27' 29.16" N	54° 35' 23.01" E	Lateral Buoy - Red	FL R 3s	New Buoy Installation - New Channel
YIW-5	24° 27' 41.87" N	54° 35' 24.39" E	Lateral Buoy - Green	FL G 3S	New Buoy Installation - New Channel
YIW-6	24° 27' 41.93" N	54° 35' 22.19" E	Lateral Buoy - Red	FL R 3s	New Buoy Installation - New Channel
YIW-7	24° 27' 59.02" N	54° 35' 21.97" E	Lateral Buoy - Green	FL G 3S	New Buoy Installation - New Channel
YIW-8	24° 27' 58.93" N	54° 35' 19.26" E	Lateral Buoy - Red	FL R 3s	New Buoy Installation - New Channel
YIW-9	24° 28' 19.50" N	54° 35' 18.24" E	Lateral Buoy - Green	FL G 3S	New Buoy Installation - New Channel
YIW-10	24° 28' 19.40" N	54° 35' 15.59" E	Lateral Buoy - Red	FL R 3s	New Buoy Installation - New Channel
YIW-11	24° 28' 37.98" N	54° 35' 15.39" E	Lateral Buoy - Green	FL G 3S	New Buoy Installation - New Channel
YIW-12	24° 28' 37.72" N	54° 35' 12.83" E	Lateral Buoy - Red	FL R 3s	New Buoy Installation - New Channel
YIW-13	24° 29' 4.05" N	54° 35' 10.74" E	Lateral Buoy - Green	FL G 3S	New Buoy Installation - New Channel
YIW-14	24° 29' 4.15" N	54° 35' 7.95" E	Lateral Buoy - Red	FL R 3s	New Buoy Installation - New Channel
YIW-15	24° 29' 14.03" N	54° 34' 57.06" E	Lateral Buoy - Green	FL G 3S	New Buoy Installation - New Channel
YIW-16	24° 29' 12.32" N	54° 34' 55.91" E	Lateral Buoy - Red	FL R 3s	New Buoy Installation - New Channel
YIW-17	24° 29' 26.39" N	54° 34' 42.94" E	Lateral Buoy - Green	FL G 3S	New Buoy Installation - New Channel
YIW-18	24° 29' 25.65" N	54° 34' 41.04" E	Lateral Buoy - Red	FL R 3s	New Buoy Installation - New Channel
YIW-19	24° 29' 41.80" N	54° 34' 29.86" E	Lateral Buoy - Green	FL G 3S	New Buoy Installation - New Channel
YIW-20	24° 29' 40.97" N	54° 34' 28.38" E	Lateral Buoy - Red	FL R 3s	New Buoy Installation - New Channel
YIW-21	24° 29' 56.13" N	54° 34' 18.87" E	Lateral Buoy - Green	FL G 3S	New Buoy Installation - New Channel
YIW-22	24° 29' 56.07" N	54° 34' 15.90" E	Lateral Buoy - Red	FL R 3s	New Buoy Installation - New Channel
YIW-23	24° 30' 11.67" N	54° 34' 22.04" E	Lateral Buoy - Green	FL G 3S	New Buoy Installation - New Channel
YIW-24	24° 30' 11.98" N	54° 34' 20.79" E	Lateral Buoy - Red	FL R 3s	New Buoy Installation - New Channel
YIW-25	24° 30' 18.14" N	54° 34' 23.62" E	Lateral Buoy - Green	FL G 3S	New Buoy Installation - New Channel
YIW-26	24° 30' 18.31" N	54° 34' 22.42" E	Lateral Buoy - Red	FL R 3s	New Buoy Installation - New Channel
YIW-27	24° 30' 24.79" N	54° 34' 24.66" E	Special Buoy - Yellow	FL Y 3S	New Buoy Installation - New Channel
YIW-28	24° 30' 26.21" N	54° 34' 24.93" E	Special Buoy - Yellow	FL Y 3S	New Buoy Installation - New Channel
YIW-29	24° 30' 29.52" N	54° 34' 28.33" E	Lateral Buoy - Green	FL G 3S	New Buoy Installation - New Channel
YIW-30	24° 30' 30.58" N	54° 34' 26.34" E	Lateral Buoy - Red	FL R 3s	New Buoy Installation - New Channel
YIW-31	24° 30' 37.89" N	54° 34' 56.22" E	Lateral Buoy - Green	FL G 3S	New Buoy Installation - New Channel
YIW-32	24° 30' 40.22" N	54° 34' 53.52" E	Lateral Buoy - Red	FL R 3s	New Buoy Installation - New Channel
YIW-33	24° 30' 56.54" N	54° 35' 26.74" E	Lateral Buoy - Green	FL G 3S	New Buoy Installation - New Channel
YIW-34	24° 30' 59.23" N	54° 35' 23.93" E	Lateral Buoy - Red	FL R 3s	New Buoy Installation - New Channel
YIW-35	24° 31' 12.57" N	54° 35' 45.18" E	Lateral Buoy - Green	FL G 3S	New Buoy Installation - New Channel
YIW-36	24° 31' 14.29" N	54° 35' 41.61" E	Lateral Buoy - Red	FL R 3s	New Buoy Installation - New Channel