



Ref : ADM/LMN/2025/100 : المرجع
Date: 18/10/2025 : التاريخ

LOCAL MARINE NOTICE IN ABU DHABI

النشرة البحرية المحلية لإمارة أبوظبي

To : All users of waterways, mariners and maritime operators in Abu Dhabi

إلى : جميع مستخدمي الممرات المائية والبحارة والمشغلين البحريين في أبوظبي

Location : Waterways west of Mugharraq Port, Western Region

الموقع : الممرات المائية الممتدة غرب ميناء مغرق، المنطقة الغربية

Subject : Geotechnical Investigation and Bathymetric Survey

الموضوع : فحص جيوتقني ومسح بحري لقياس الأعماق

Please be informed that a Geotechnical Investigation and Bathymetric Survey will be carried out west of Mugharraq Port, Western Region, Abu Dhabi. The work will start from 16th of October 2025 at 06:00 am and continue until 6th of January 2026 at 06:00 pm. Location and coordinates of the survey areas are illustrated as per the attached map for your reference.

نحيطكم علماً بأنه سيتم إجراء فحص جيوتقني ومسح بحري لقياس الأعماق في الممرات المائية الممتدة غرب ميناء مغرق، المنطقة الغربية في إمارة أبوظبي، حيث ستبدأ الأعمال اعتباراً من 16 أكتوبر 2025 في تمام الساعة 06:00 صباحاً وتستمر حتى 6 يناير 2026 في تمام الساعة 06:00 مساءً. يمكنكم الرجوع إلى الخريطة المرفقة للاطلاع على موقع وإحداثيات مناطق المسح.

For early warning and agreement of safe passage, communication can be established with the Survey Team:

للإنذار المبكر والاتفاق على توفير ممر آمن، يمكنكم التواصل مع فريق المسح:

- 1- Eng. Haytham Yousef, Mobile No: 0554706261.
- 2- Eng. Nadeem Iqbal, Mobile No: 0552489107

- 1- المهندس/ هيثم يوسف، هاتف متحرك: 0554706261.
- 2- المهندس/ نديم إقبال، هاتف متحرك: 0552489107.

All users of waterways, mariners and maritime operators are advised to stay vigilant and exercise extra caution while transiting through the area of operations.

ينصح جميع مستخدمي الممرات المائية والبحارة والمشغلين البحريين بتوخي مزيد من الحيلة والإبحار بحذر أثناء المرور عبر منطقة العمليات.

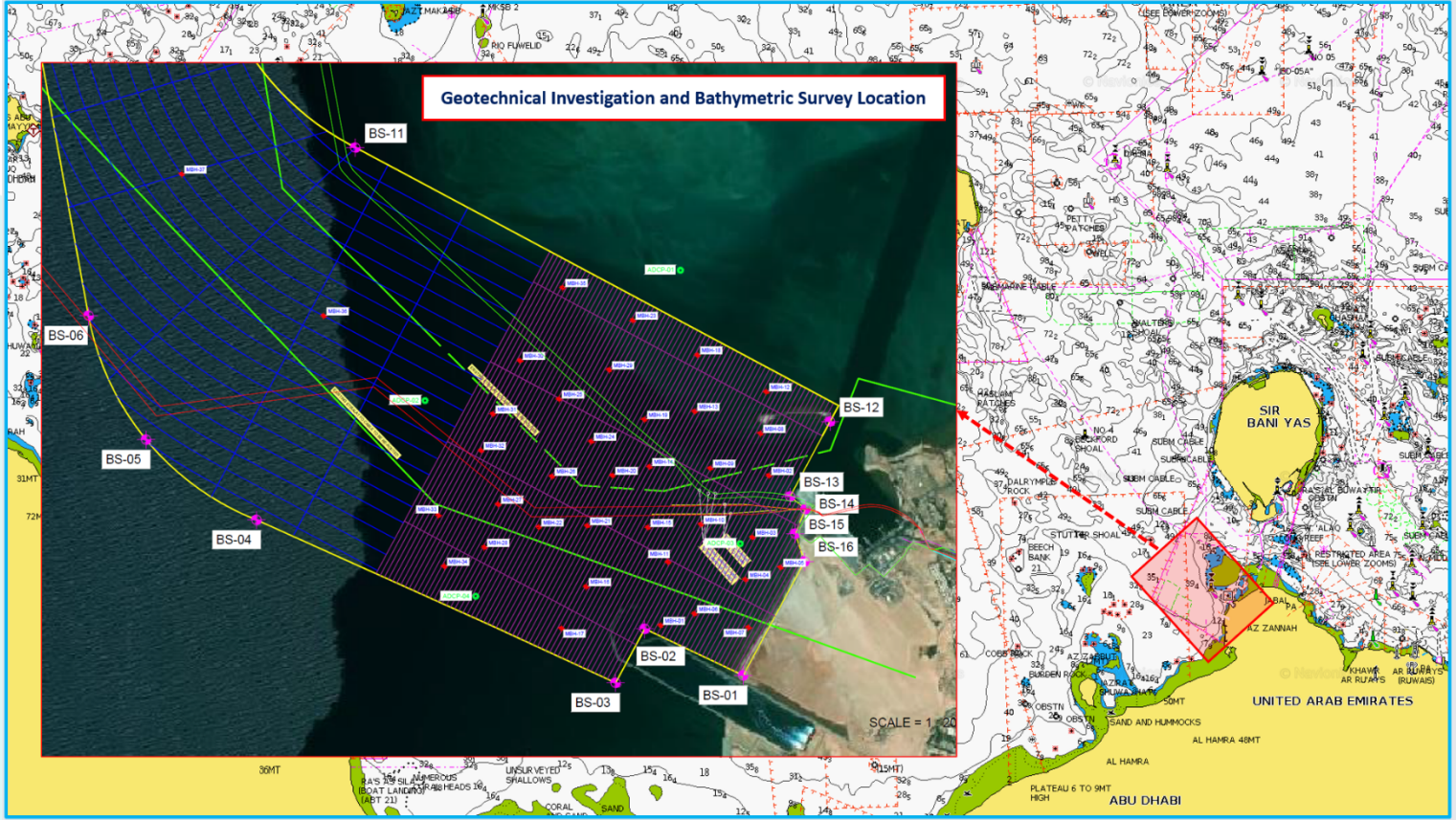
سيف المهيري

الرئيس التنفيذي - أبوظبي البحرية

Capt. Saif Al Mheiri
CEO - Abu Dhabi Maritime



الخريطة التوضيحية والإحداثيات والجدول الزمني
Illustrative Map, Coordinates & Schedule





Geotechnical Investigation Location

Geotechnical Works for **Area-1** will be conducted between **October 21, 2025 to November 07, 2025**

BH ID	Latitude	Longitude
MBH-01	24.1769457644305	52.5581808905573
MBH-02	24.1843543603298	52.5641475665041
MBH-03	24.1812853726387	52.5632316424951
MBH-04	24.1791869279829	52.5628242038296
MBH-05	24.1797727770748	52.5647428691450
MBH-06	24.1775082101911	52.5600267751471
MBH-07	24.1767918422293	52.5629603010673
MBH-08	24.1864564071853	52.5637300152498
MBH-09	24.1847493179103	52.5609790976779
MBH-10	24.1819545089204	52.5604345093849
MBH-11	24.1801033241178	52.5586282978090
MBH-12	24.1885258692872	52.5640705921461

Geotechnical Works for **Area-2** will be conducted between **November 08 to November 20, 2025**

BH ID	Latitude	Longitude
MBH-13	24.1875854788463	52.5601597783643
MBH-14	24.1848611059450	52.5576799600102
MBH-15	24.1818369698842	52.5575595691381
MBH-16	24.1789148418601	52.5541557676030
MBH-17	24.1768570959171	52.5528012502490
MBH-18	24.1903958894792	52.5603454973435
MBH-19	24.1872158641279	52.5574243438905
MBH-20	24.1844466778387	52.5556671244690
MBH-21	24.1819493354404	52.5542608906152

Geotechnical Works for **Area-3** will be conducted between **November 21, 2025 to December 10, 2025**

BH ID	Latitude	Longitude
MBH-22	24.1819134981239	52.5516193769965
MBH-23	24.1921594190955	52.5568551167735
MBH-24	24.1861515739379	52.5545282713310
MBH-25	24.1882840375799	52.5528052040986
MBH-26	24.1844345320430	52.5523769775384
MBH-27	24.1830698140096	52.5494350117569
MBH-28	24.1809338915714	52.5486519971446
MBH-29	24.1897089685857	52.5555443972070

Geotechnical Works for **Area-4** will be conducted between **December 11 to December 20, 2025**

BH ID	Latitude	Longitude
MBH-30	24.1902205239285	52.5507070895481
MBH-31	24.1875726006494	52.5491994624430
MBH-32	24.1857611590066	52.5485319136427
MBH-33	24.1825508310325	52.5461759043582
MBH-35	24.1938305350503	52.5530633500220

Geotechnical Works for **Area-5** will be conducted between **December 21 to December 24, 2025**

BH ID	Latitude	Longitude
MBH-36	24.1925538447160	52.5400671388888
MBH-37	24.1996964290416	52.5324305906344
MBH-38	24.2137985903819	52.5279499219285

Bathymetric Survey Location

Bathymetric Survey **Area-1** will be conducted between **14 to 16 October 2025.**

Latitude	Longitude
24.1745872883799	52.5545865244470
24.1898871558934	52.5638342881672
24.1878055315846	52.5679889655620
24.1833068092810	52.5653059249474
24.1826697792063	52.5661300573738
24.1814462368876	52.5655564352222
24.1800592930650	52.5660531017498
24.1744148100195	52.5626412404635
24.1767932274256	52.5573264352540
24.1741152874124	52.5557079683378

Bathymetric Survey **Area-2** will be conducted between **18 to 20 October 2025.**

Latitude	Longitude
24.1921729731958	52.5593070185188
24.1898927279371	52.5638376567531
24.1745872883799	52.5545865244470
24.1766348566931	52.5499157954726

Bathymetric Survey **Area-3** will be conducted between **21 to 23 October 2025.**

Latitude	Longitude
24.1944716657310	52.5547874414962
24.1921915464310	52.5593182460606
24.1766348566931	52.5499157954726
24.1786249257472	52.5452102486544

Bathymetric Survey **Area-4** will be conducted between **25 to 26 October 2025.**

Latitude	Longitude
24.1956459740031	52.5524020144138
24.1944419476240	52.5547694786839
24.1786249257472	52.5452102486544
24.1796856103992	52.5427564485757

Bathymetric Survey **Area-5** will be conducted between **27 to 29 October 2025.**

Latitude	Longitude
24.1908938162573	52.5495297636257
24.1948472319428	52.5519064327432
24.1994148584174	52.5428024313463
24.2013894515730	52.5398678002160
24.2039997814423	52.5375989508623
24.2068354259081	52.5352015002805
24.2617230244437	52.5183460274697
24.2607438263788	52.5145540253191
24.2058565666637	52.5314110464258
24.2016432692497	52.5332621354798
24.1983767956107	52.5361894935728
24.1959843188400	52.5392097707954

Bathymetric Survey **Area-6** will be conducted between **30 October to 02 November 2025.**

Latitude	Longitude
24.1908938162573	52.5495297636257
24.1796856103992	52.5427564485757
24.1861468914546	52.5305102246369
24.1886828023594	52.5287697993787
24.1907258745770	52.5278232077947
24.1943075300502	52.5269852733738
24.2020540631011	52.5255363497356
24.2436968598182	52.5177448336170
24.2522203508186	52.5161495201577
24.2524651523162	52.5170974540055